

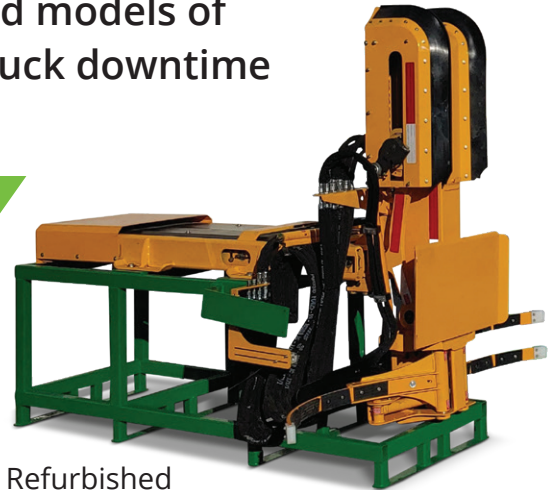
Wastebuilt repairs and refurbishes all-makes and models of automated side-loader (ASL) arms minimizing truck downtime by providing refurbished drop-in replacements.

## Why Refurbished ASL Arms?

- Fast turnaround, reduced downtime
- Extend the useful life of ASL Arms
- Substantial savings compared to new
- Proven “refurb” process and experience
- OEM quality replacement parts
- Core inspection and exchange process
- 12-month limited warranty

## Refurbished Arms Program

- Ideal solution for automated refuse fleets
- Substantial savings compared to buying new
- Attractive pricing and fleet unique options
- All makes/models capability
- OEM quality replacement parts throughout refurb process
- Core exchange program for fleets with repairable cores
- Proven “refurb” process with extensive experience
- Repairable core must be returned within 30-days
- Custom cradles for shipping arms and cores
- Direct Ship or In-Shop Swap options
- Wastebuilt actively buys repairable ASL Arm cores



Refurbished  
Labrie Arm



Refurbished  
Heil Arm



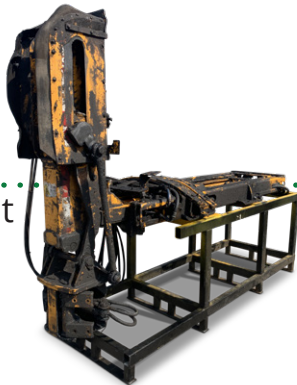
Refurbished  
McNeilus Arm

Version: 2020/10

## Core Charge & Return Process

- A worn arm is not the same thing as a broken arm.
- Cores must have remaining useful life to be refurbished.
- Cores must be returned within 30-days. Most cores will require some level of repair work to get them up to par for the next refurbishment.
- Wastebuilt performs an inspection of each arm returned for core eligibility.
- Wastebuilt will summarize which wear parts, if any, need to be replaced to get the core ready for the refurbishment.

**Before**  
Refurbishment



**After**  
Refurbishment



## Warranty

- 12-month warranty against defects due to materials and workmanship provided that the OEM's preventive maintenance recommendations and schedule are followed.
- Warranty will not apply to normal wear and tear nor does it apply to any arms that have been subject to misuse, lack of maintenance, misapplication, neglect, or have been modified by non-Wastebuilt personnel or Acts of God.

## Disclaimer

Wastebuilt provides repairs on automated side loader (ASL) arms to extend the useful life of these products. Any used arms repaired or sold by Wastebuilt are repairs to products legally owned by Wastebuilt or its customers and not subject to any contracts explicitly restricting repair. Wastebuilt does not manufacture new arms, nor refurbish arms that have reached the end of their useful life.